



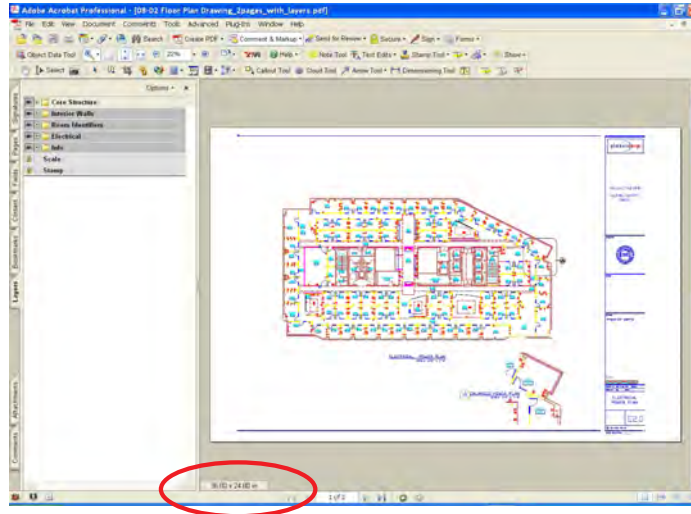
# Using the Snapshot Tool

## The Snapshot Tool

For large or complex PDF documents, the Snapshot Tool in Acrobat/Reader 7 can be an easy way to identify a print region.

The document seen in Figure 1 is 36 x 24 inches

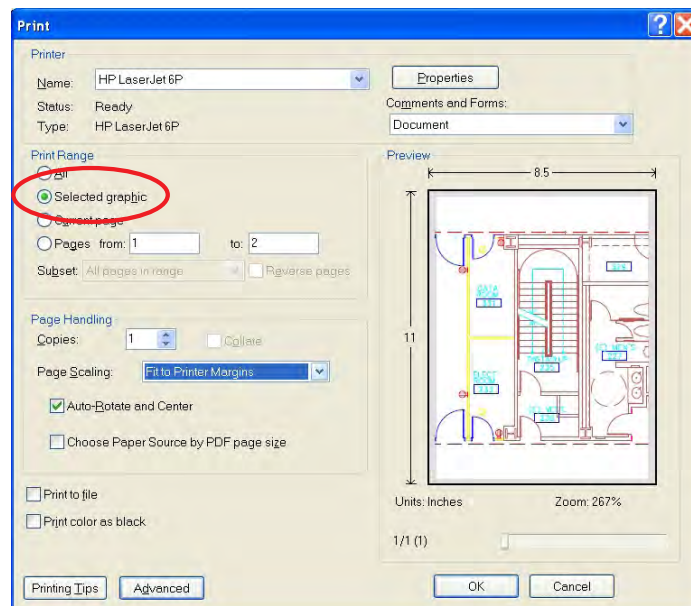
Figure 1



Using the Snapshot Tool select a region of your document. This information is then saved to the Clipboard.

Options are:

1. Create a new PDF – File> Create PDF > From Clipboard Image (Acrobat only)
2. Select Print and you'll see a new selection “Selected graphic” (figure 2)
3. Use this graphic in another application by pasting to that application.



### FOR MORE INFORMATION

If you'd like to provide feedback on this tip or if you have questions, send e-mail to [Lori DeFurio](mailto:Lori.DeFurio@adobe.com), Developer Evangelist.

Adobe Systems Incorporated • 345 Park Avenue, San Jose, CA 95110-2704 USA • [www.adobe.com](http://www.adobe.com)

Adobe, the Adobe logo, Acrobat, Adobe Portable Document Format, Reader, LiveCycle, Adobe Intelligent Document Platform are either registered trademarks or trademarks of Adobe Systems Incorporated in the United States and/or other countries. All other trademarks are the property of their respective owners.

