

## Working with Dynamic Images

There are several form solutions where importing an image dynamically may come in handy. For example, you're creating an ID card where you want the applicant's photograph to appear.

Both Acrobat-created forms and Designer-created forms can work with dynamic images. Each tool handles dynamic images a bit differently, therefore, this tip describes each method.

### Acrobat Forms

To import an image, a Button field is used. Acrobat allows you to import into a button field a variety of file formats (basically the list that supports PDF creation).

Using Acrobat 7 Professional, I created a button (myButton) and added the JavaScript

```
event.target.buttonImportIcon();
```

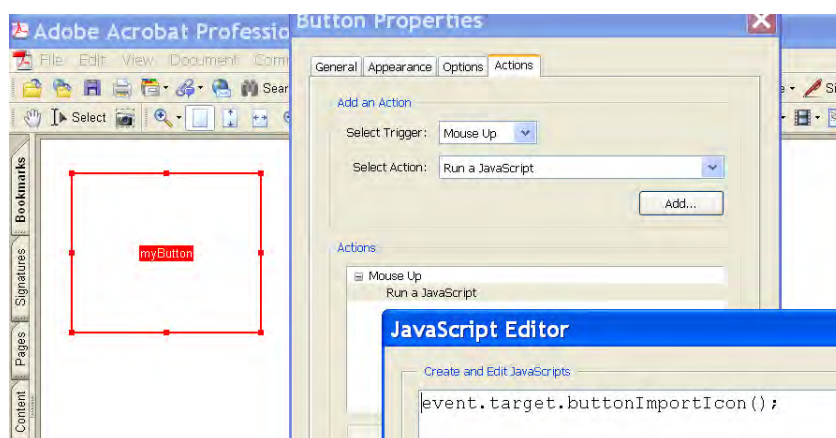


Figure 1

When the button is clicked, the user is prompted to select a supported file type for the image. With Acrobat, any file type supported by 'Create File' is available to populate the button image.

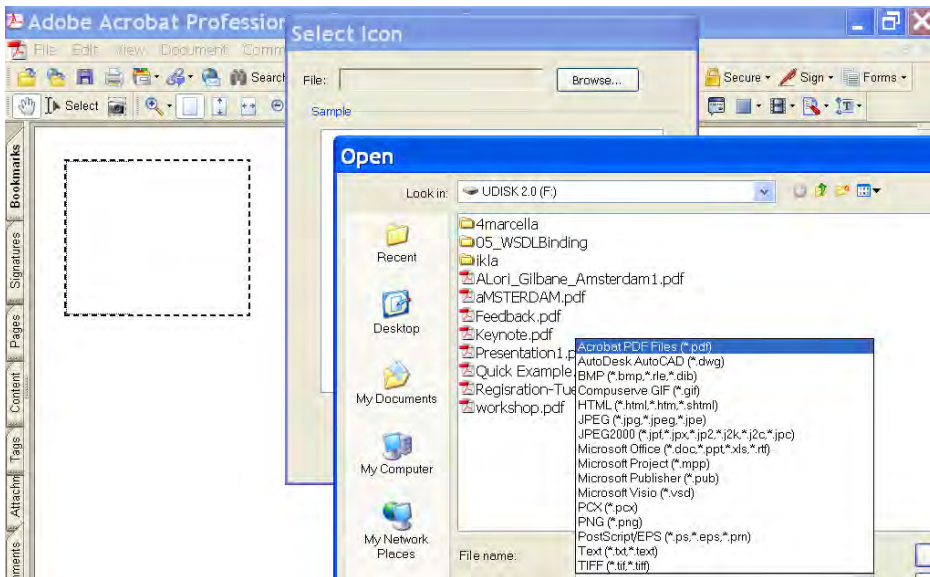


Figure 2

I've selected a JPG image and the result is as follows:

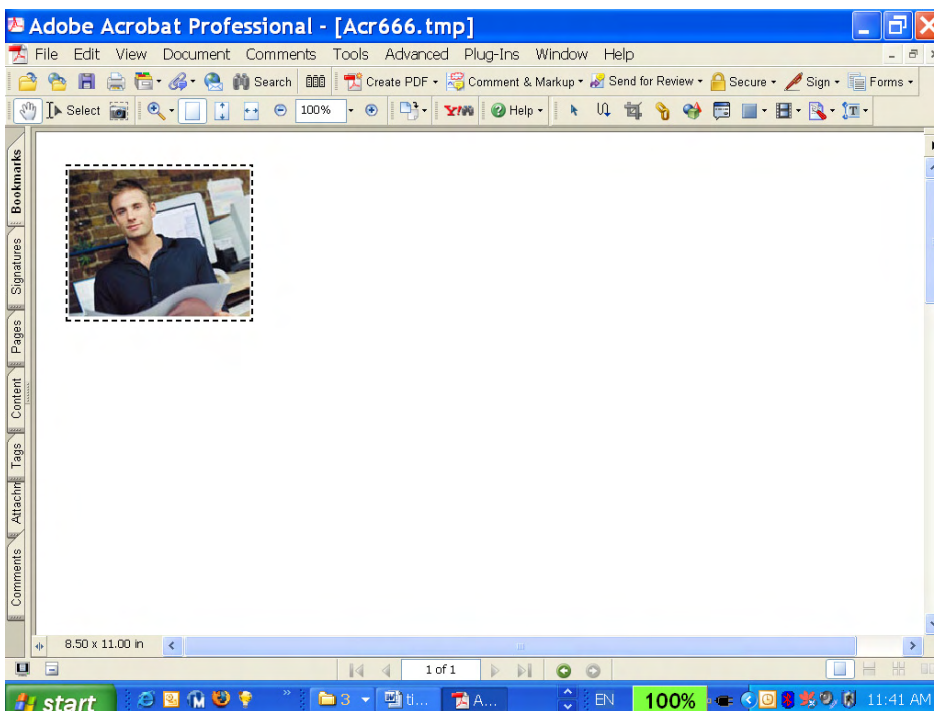


Figure 3

One important fact is that `buttonImportIcon()` does not work in Adobe Reader, so the user would need Acrobat 7 Standard or Acrobat 7 Professional.

### Adobe LiveCycle Designer Forms

LiveCycle Designer has an "Image Field" object that can be used to in a similar capacity to the Acrobat "Button" field, however, no programming is required and it does work with Adobe Reader.

Using Adobe LiveCycle Designer 7, I created an Image Field (`myImageField`) and set the properties (dashed line, no caption) and saved as a PDF.

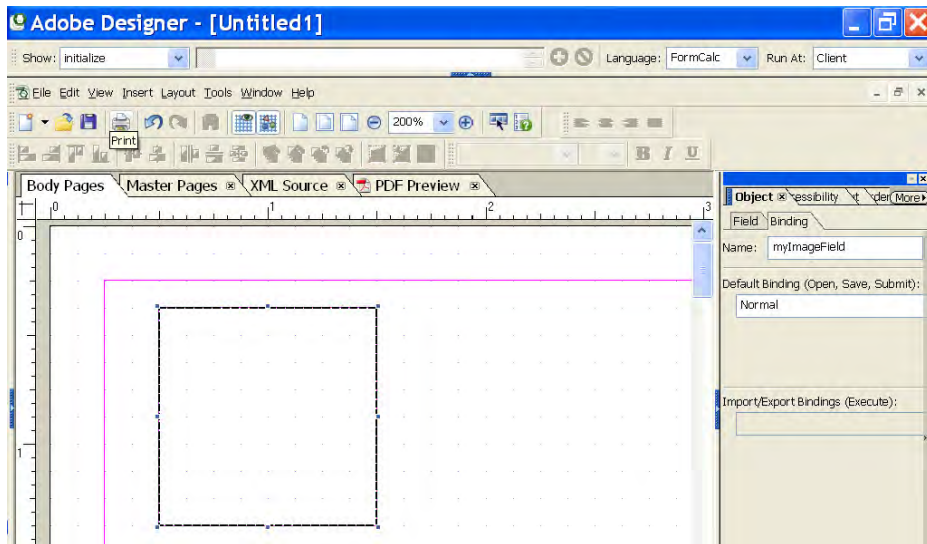


Figure 4

When the object is clicked, the user is prompted to select a supported file type for the image. ImageField supports \*.jpg, \*.gif, \*.png, \*.tif to populate the field.

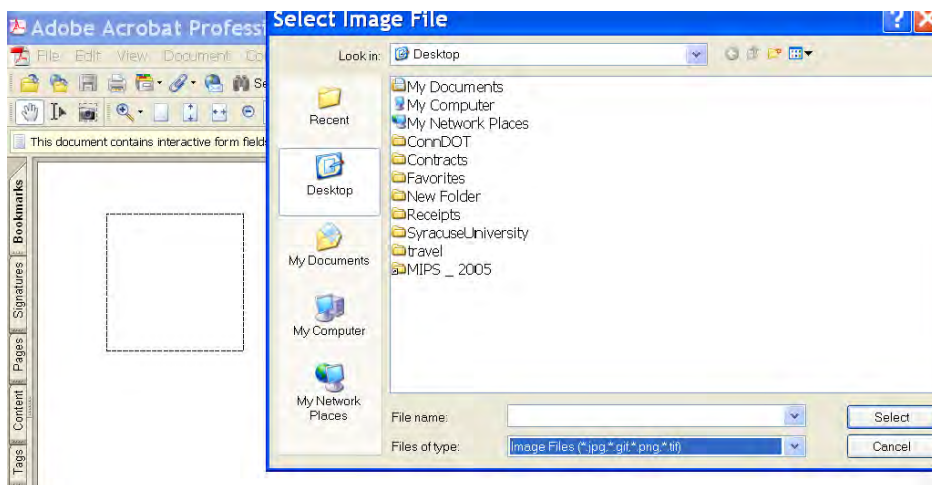


Figure 5

Selecting the same JPG image, we get a similar result; in both instances, when prompted to select an image, the operating system was used to locate a local file.

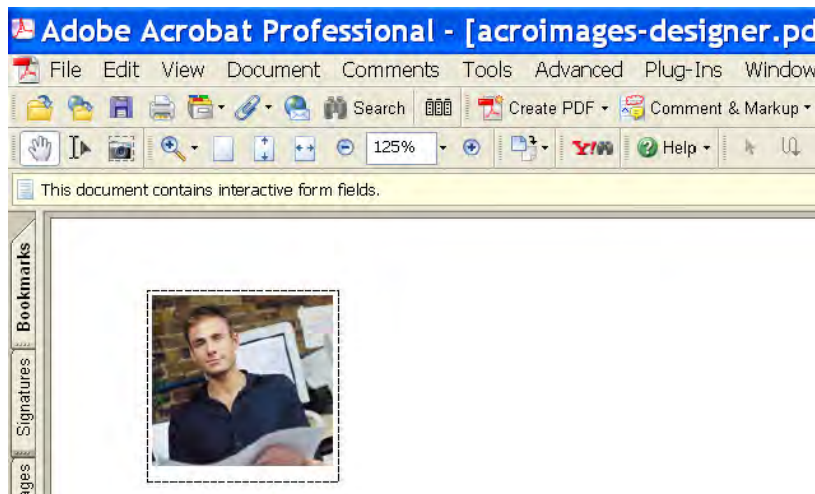


Figure 6

## Populating the field/button dynamically

As you may have noticed, in both instances, when prompted to select an image, the operating system was used to locate a local file.

Many times you might want the image to populate automatically, either based on a login, or some other information acquired. Or you may want to access an image via a URL.

Using LiveCycle Designer, I created a JavaScript on the 'form:ready' event as follows:

`myImageField.value.image.href = http://www.adobe.com/imageshome/pdfgift\_home.gif`

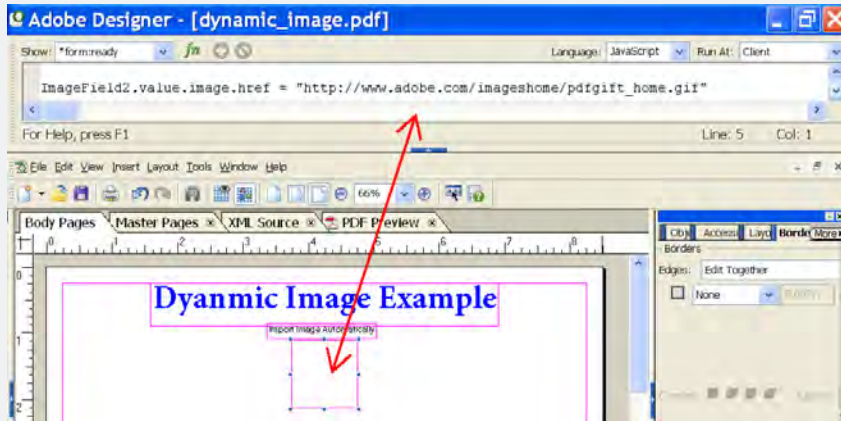


Figure 7

When the form is opened (in Acrobat or Adobe Reader) the field is populated automatically with the graphic specified.

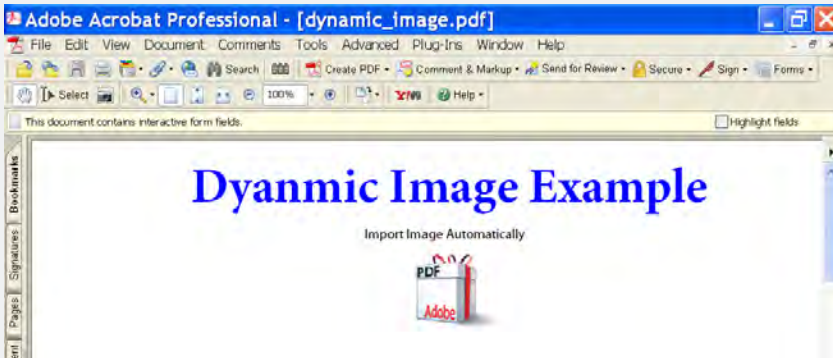


Figure 8

Adobe helps people create, manage, and deliver the highest quality digital content in the world.  
**Better by Adobe.™**

**Adobe Systems Incorporated**  
345 Park Avenue, San Jose, CA 95110-2704 USA  
[www.adobe.com](http://www.adobe.com)

Adobe, the Adobe logo, Acrobat, Adobe LiveCycle, Reader, Acrobat are either registered trademarks or trademarks of Adobe Systems Incorporated in the United States and/or other countries. All other trademarks are the property of their respective owners.

© 2005 Adobe Systems Incorporated. All rights reserved.  
09/05

